

# UNION CLAMP 3A

## CARACTERISTICAS:

ACERO INOXIDABLE

CALIDAD 304 – 316L

NORMA CLAMP

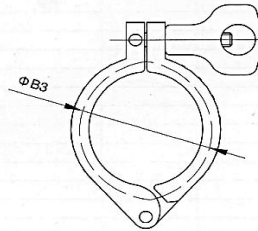
SELLO EPDM

## USO:

AREA DE ALIMENTOS, QUIMICA Y FARMACEUTICA.

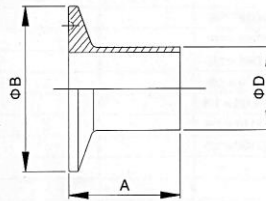


重型卡箍(13MHH)  
Heavy duty clamp 60063



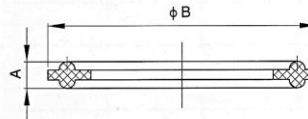
Size	B3						kg
1/2"	28.0						
3/4"	28.0						
1"	53.9						
1 1/2"	53.9						
2"	67.4						
2 1/2"	80.9						
3"	94.4						
4"	122.4						
6"	170.4						
8"	221.2						
10"	270.0						

3A | 60048



Size	B	D	A			kg
			14WMP	14MMP	14AMP	
1"	50.5	25.4	12.7	21.5	28.6	
1 1/2"	50.5	38.1	12.7	21.5	28.6	
2"	64.0	50.8	12.7	21.5	28.6	
2 1/2"	77.5	63.5	12.7	21.5	28.6	
3"	91.0	76.2	12.7	21.5	28.6	
4"	119.0	101.6	15.8	21.5	28.6	
6"	167.0	152.4	22.2	21.5	38.1	
8"	217.7	203.2	22.2	21.5	38.1	
10"	268.5	254.0	22.2	21.5	38.1	

3A | 60060



Size	A	B					kg
1"	5.0	50.5					
1 1/2"	5.0	50.5					
2"	5.5	64.0					
2 1/2"	5.5	77.5					
3"	5.5	91.0					
4"	5.5	119.0					
6"	5.5	167.0					
8"	5.5	217.7					
10"	5.5	268.5					

